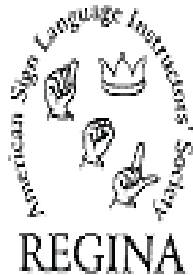


Saskatchewan Deaf and Hard of Hearing Services Inc. (SDHHS)

SDHHS's mission to promote the independence of Deaf, Late-Deafened and Hard of Hearing persons by providing services to enhance their quality of life



For More information please contact:

SDHHS

2341 Broad Street

Regina SK, S4P 1Y9

Phone/TTY: (306) 352-3323

Toll Free/TTY: 1-800-565-3323

Fax: (306) 757 3252

Email: regina@sdhhs.com

Local Organizations of the Deaf

- Regina Association of the Deaf
 - Regina Dart League
 - Regina Deaf Athletic Club

Continue Your Studies At:

- Medicine Hat College, AB
Hearing assistant
- University of Manitoba/Red River College, MB
Sign Language and Deaf Studies, ASL English Interpreter
- Minot State University, ND
Education of the Deaf
- University of Alberta/Lakeland College, AB
Sign Language and Deaf studies, ASL- English Interpreter program
- Douglas College, BC
ASL-English Interpreter Program
Vancouver Community College, BC
Sign Language and Deaf Studies
- Cambrian College, ON
ASL-English Interpreter Program
- George Brown College, ON
ASL-English Interpreter program
- St. Clair College, ON
ASL-English Interpreter program
- Nova Scotia Community College, NS
ASL-English Interpreter program
- Academy Canada Career College, NFLD
ASL-English Interpreter Program

American

Sign

Language

A



S



L



Fall 2011

What is American Sign Language?

American Sign Language (ASL) is a visual gestural language created and used primarily by at least two million Deaf North Americans, of all ages. It is much different from any spoken language especially English.

What is meant by gestural?

The units of ASL are composed of specific movements and shapes of the hands, arms, eyes, face, head and body posture. These movements or gestures serve as the 'words' or 'phrases' and 'intonation' of the language.

What is meant by visual?

Since ASL uses body movements instead of sound, 'listeners' or 'receivers' use their eyes instead of their ears to understand what is being said. Because all linguistic information must be received through the eyes, the language is structured to fit the needs and capabilities of the eyes. In other words, ASL has its own grammatical rules.

Fall 2011 Courses

Registration and Orientation Night

Date: Thursday September 1, 2011

Time: 7:00 p.m. to 8:30 p.m.

Location: Saskatchewan Deaf and Hard of Hearing Services 2341 Broad St., Regina

Registration deadline is August 29, 2011

Commencement of Classes:

Date: September 13 to December 15

Time: 6:45 p.m. to 9:15 p.m.

Location: Miller Comprehensive High School
1027 College Avenue, Regina

Class Fees

ASL Level One\$150.00
(Units 1-8)

ASL Level Two.....\$165.00
(Units 9-16)

ASL Level Three.....\$180.00
(Units 17-24)

ASL Level Four.....\$180.00

Please Note:

- Classes are held once a week
- Classes are limited to 16 students
- 70% attendance is required for completion
- Ages 16 and up
- School Projects
- Interpreting Pre-training
- ASL Director: Twyla Chartrand
- Approximately 12-15 weeks, 3hr classes

ASL Registration Form

Description	Qty.	Fee
ASL Level 1	1	\$150.00
ASL Level 2	1	\$165.00
ASL Level 3	1	\$180.00
ASL Level 4	1	\$180.00
ASL Text Level 1, 2, 3	1	\$150.00
ASL Text Level 4	1	\$75.00

Total

Name

Address

(City) (Prov.) (Postal Code)
Phone/TTY

Email

Method of Payment :

- Cheque MasterCard
 Cash Visa
 Debit Invoice

Credit Card No. Expire Date

Signature

Please note:

Payment is required prior or on orientation night

Please make cheques payable to SDHHS
2341 Broad Street Regina SK S4P 1Y9